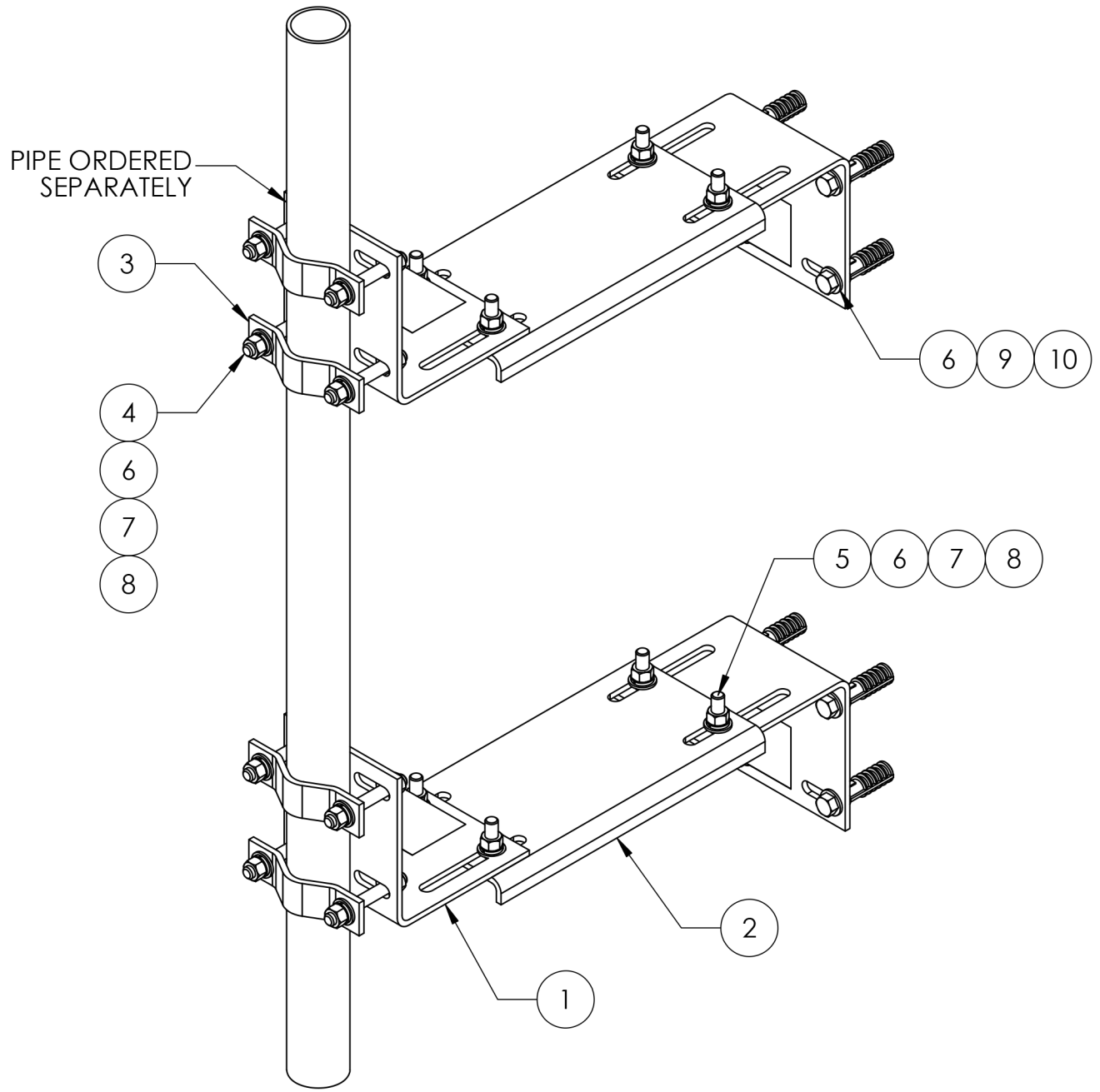
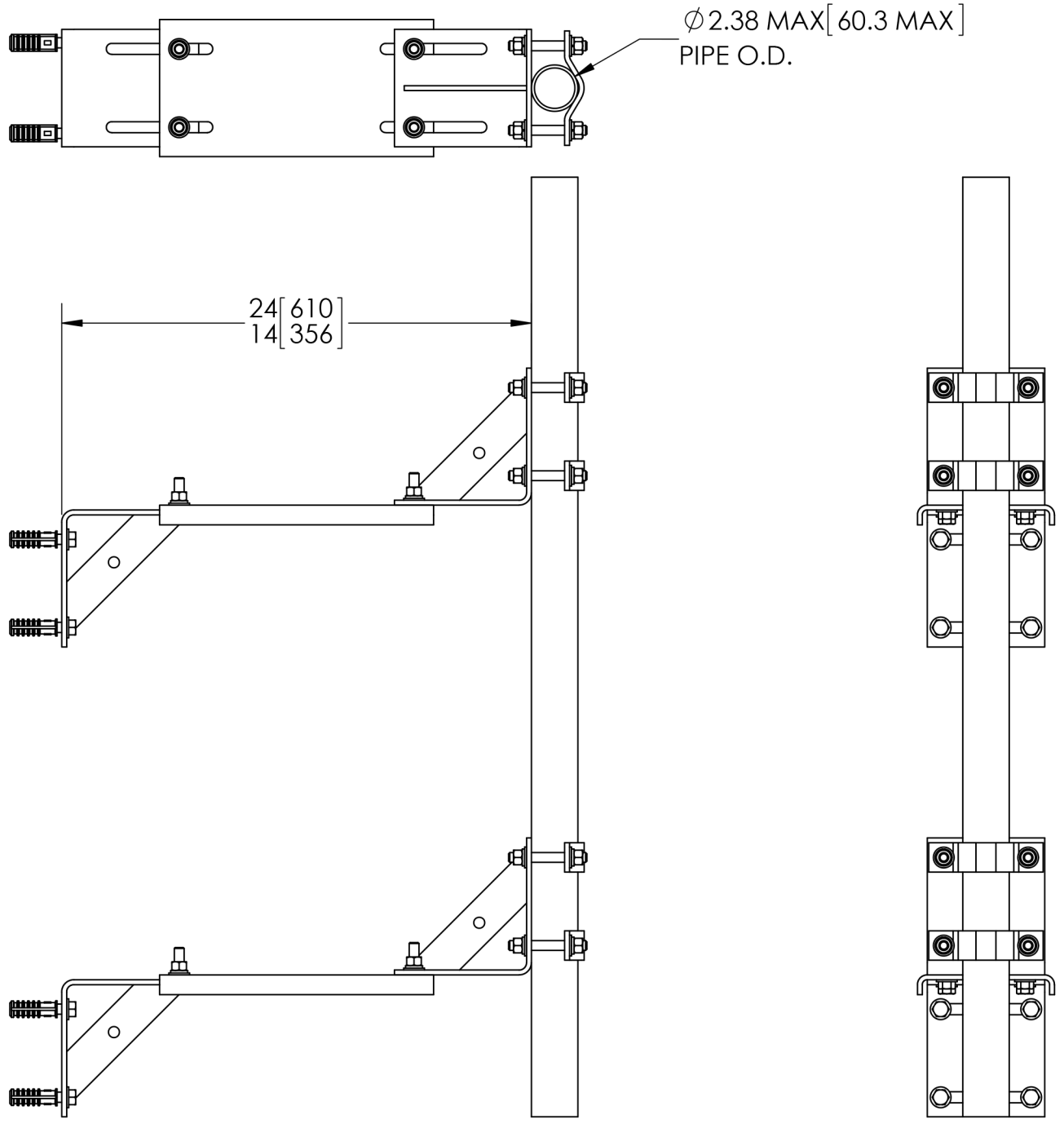


ITEM	PART NO.	DESCRIPTION	QTY.	WEIGHT
1	WMU.01	WALL MOUNT BRACKET	4	6.09 LBS
2	WMU.03	EXTENSION PLATE	2	7.84 LBS
3	ACP10	1.5" - 3.5" O.D. CLAMP HALF	4	0.61 LBS
4	MT-379-4	1/2"-13 UNC x 4" Galv Threaded Rod	8	0.22 LBS
5	GB04205	1/2" X 2" GALV BOLT KIT	8	0.16 LBS
6	GWF-04	1/2" GALV FLAT WASHER	40	0.02 LBS
7	GWL04	1/2" GALV LOCK WASHER	24	0.01 LBS
8	GN-04	1/2-13 UNC GALV HEX NUT	24	0.04 LBS
9	GLS0424	1/2" X 2-1/2" GALV LAG SCREW	8	0.15 LBS
10	LSG04S	1/2" SHORT GALV LAG SHIELD	8	0.13 LBS

REVISIONS					
REV.	ECN	ZONE	DESCRIPTION	BY	DATE
A			INITIAL RELEASE	ACG	12/04/14



NOTES:
 1. ALL METRIC DIMENSIONS ARE IN BRACKETS.

These drawings and specifications are the proprietary property of Ventev, and may be used only for the specific purpose authorized in writing by Ventev. ALL DIMENSIONS ARE IN INCHES U.O.S. TOLERANCES UNLESS OTHERWISE SPECIFIED: .X = ± .06 ANGLES ±2° .XX = ± .03 FRACTIONS ±1/32 .XXX = ± .010 REMOVE BURRS AND BREAK EDGES .005	DRAWN BY: ACG	SHEET: 1 of 1	PART NUMBER: WSHD5WMU1424 WLS SKU # 510727
	CHECKED BY: CC	SCALE: NTS	DESCRIPTION: UNIVERSAL HEAVY DUTY SOLID WALL MOUNT, 14"-24"
	DATE: 12/04/14	MATERIAL: ASTM A36	DRAWING TYPE: ASSEMBLY DRAWING
	REVISION: A	FINISH: ASTM A123	
DO NOT SCALE THIS PRINT		WEIGHT: 49.89 LBS	