

CONCEALFAB® DAS & SMALL CELL SOLUTIONS

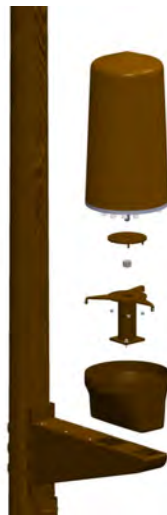
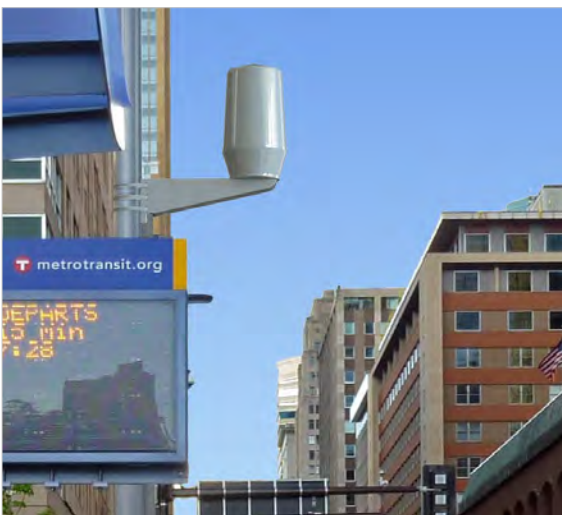
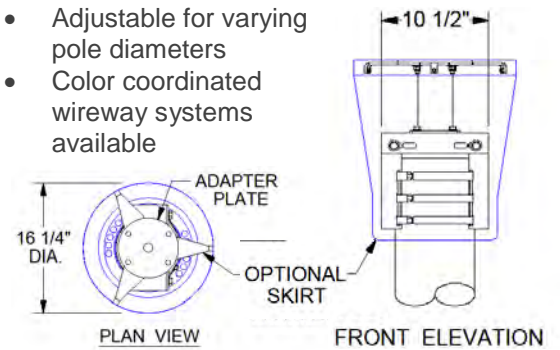
Customized for all Major Quasi-Omni Antennas



Pole-Top Mounting System

General Specifications:

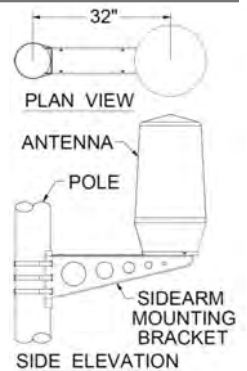
- Penetrating or clamping attachments
- Adjustable for varying pole diameters
- Color coordinated wireway systems available



Side-Arm Mounting System

General Specifications:

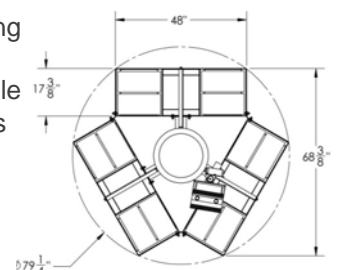
- Penetrating or clamping attachments
- Hollow core for concealing cables or diplexers
- Color-coordinated wireway systems available
- Adjustable bracing for varying pole diameters



Ballasted Rooftop Vent

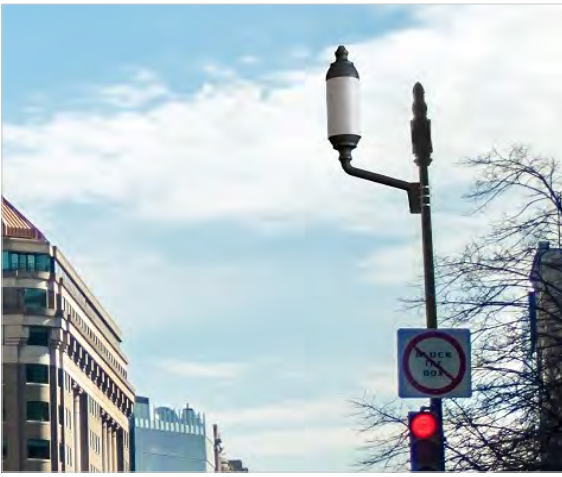
General Specifications:

- One-piece construction (no on-site welding required)
- Ultra-RF transparent sheathing
- Multiple color options available
- Accommodates varied heights
- Optional RRU mounting post



WWW.CONCEALFAB.COM 719.599.3400 SALES@CONCEALFAB.COM

©2013 ConcealFab Corporation. All Rights Reserved D071328
Content and specifications are typical and subject to change without notice



Lightenna™

General Specifications:

- Penetrating or clamping Side-Arm attachments
- Site-specific adaptations available
- Hollow Side-Arm bracket for cable concealment
- 100% Thermoplastic outer shell
- Adjustable bracing for varying pole diameters



Pole-Top Extension Mount

General Specifications:

- Penetrating or clamping attachments
- Extension mast ensures proper distance from utility wires
- Structurally reinforced steel support
- Adjustable bracing for varying pole diameters

ConcealFab Corporation's DAS & Small Cell wireless solutions are ideal for fiber infrastructure build-outs, upgrades and retrofit projects. Our standardized platform integrates with any antenna and radio configuration, effortlessly blends into urban/suburban environments, and withstands harsh weather conditions.

Our vendor agnostic, *DAS and Small Cell Solutions* platform accommodates multiple shapes, sizes and weights, providing flexibility for future hardware needs. The product portfolio includes ultra RF-transparent, maintenance-free coverings, high-strength steel mounting brackets, and light-weight, durable carbon fiber poles. ConcealFab's product portfolio leverages three common themes: Structural Soundness, Aesthetics, and a Universal Mounting System.

Structurally Sound

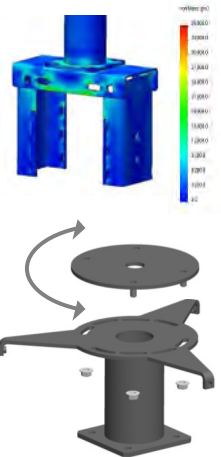
ConcealFab® DAS & Small Cell Solutions are engineered for optimal aesthetics and strength. Factory-friendly designs are structurally sound and will accommodate all Quasi-Omni and panel antennas. They are FEA rated and PE Certified for high wind loads and extreme exposure zones.

Aesthetically Pleasing

ConcealFab® structural steel mounts and brackets receive a durable powder coat finish to protect against harsh environments and create a professional appearance. Optional features include maintenance free, RF-transparent antenna shrouds, cable skirting and custom-colored wireway coverings.

Universal Mounting System

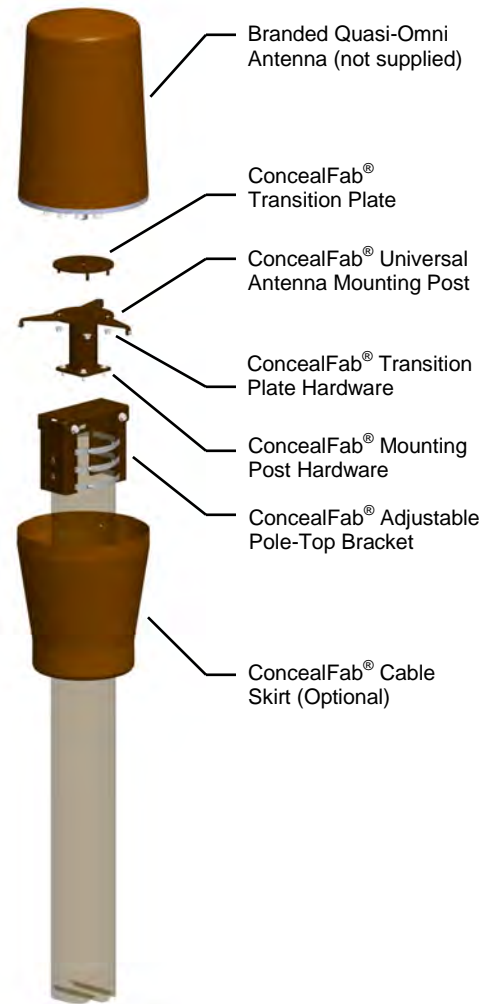
ConcealFab® mounting systems accommodate all major antenna brands. The system leverages common parts and hardware to reduce costs, improve quality, and minimize lead times.



WWW.CONCEALFAB.COM 719.599.3400 SALES@CONCEALFAB.COM

CONCEALFAB® UNIVERSAL POLE-TOP MOUNTING SYSTEM

Customized for all Major Quasi-Omni Antennas



DAS and Small Cell Solutions

Universal Pole-Top Mounting System - Customized for Quasi-Omni Antennas

ConcealFab's proven wireless solutions are ideal complements to all infrastructure upgrades or retrofit projects. Our standard or custom systems integrate with any antenna and radio configurations, effortlessly blend into urban/suburban environments, and withstand harsh weather conditions. This vendor agnostic, *DAS and Small Cell Solutions* platform accommodates multiple shapes, sizes and weights, providing flexibility for future hardware needs. The product portfolio includes ultra RF-transparent, maintenance-free coverings, high-strength steel mounting brackets, and light-weight, durable carbon fiber poles.

General Specifications:

- Rated for extreme exposure zones
- Penetrating or clamping Pole-Top attachments
- Universal platform for all hardware options
- Site-specific adaptations available
- Hollow core for concealing cables or diplexers
- Color-coordinated wireway systems available
- Adjustable bracing for varying pole diameters
- Modular configurations blend into any environment



WWW.CONCEALFAB.COM PH:719.599.3400 SALES@CONCEALFAB.COM

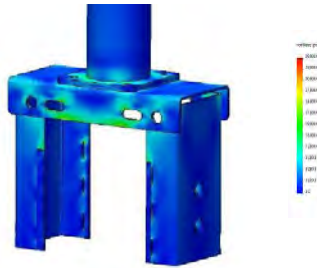
©2013 ConcealFab Corporation. All Rights Reserved D071328
Content and specifications are typical and subject to change without notice

CONCEALFAB® UNIVERSAL POLE-TOP MOUNTING SYSTEM

Customized for all Major Quasi-Omni Antennas



Structurally Sound

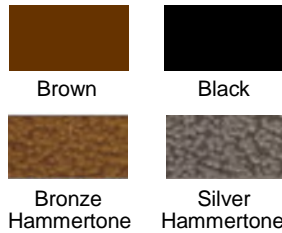


- Structurally designed and reinforced to accommodate Quasi-Omni Antennas
- FEA Rated for 150 MPH wind gusts
- PE Certified for extreme exposure zones



Aesthetically Pleasing

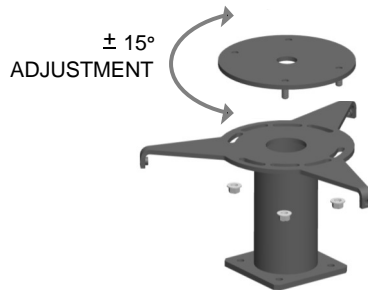
MULTIPLE COLOR OPTIONS



- Powder-coat finish protects against harsh weather
- Matches common infrastructure such as wooden or steel utility poles
- Optional wire-marshalling area skirt
- Optional custom color matching

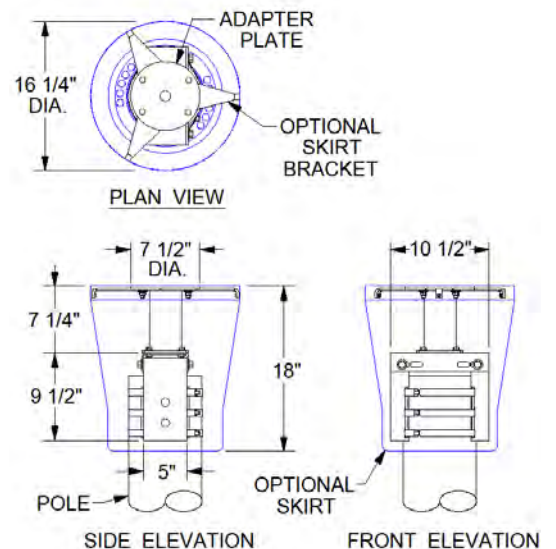


Universal Platform



- Universal mounting plates/adaptors for: Kathrein-Scala, CSS, Andrew and Amphenol
- Mounting plate configuration accommodates post-installation azimuth adjustment
- Seamlessly integrates with all ConcealFab RF-transparent antenna pods
- Optional mast configuration to mount individual or multiple panel antennas

MECHANICAL SPECIFICATIONS AS DRAWN	
SPECIFICATION	MEASUREMENT
BRACKET HEIGHT	16 3/4" (425.5mm)
BRACKET WIDTH (CLAMP)	5" (127mm)
BRACKET LENGTH	11" (279.4mm)
HEIGHT WITH SKIRT	18" (457mm)
BRACKET WEIGHT	26 pounds (11.8 kg)

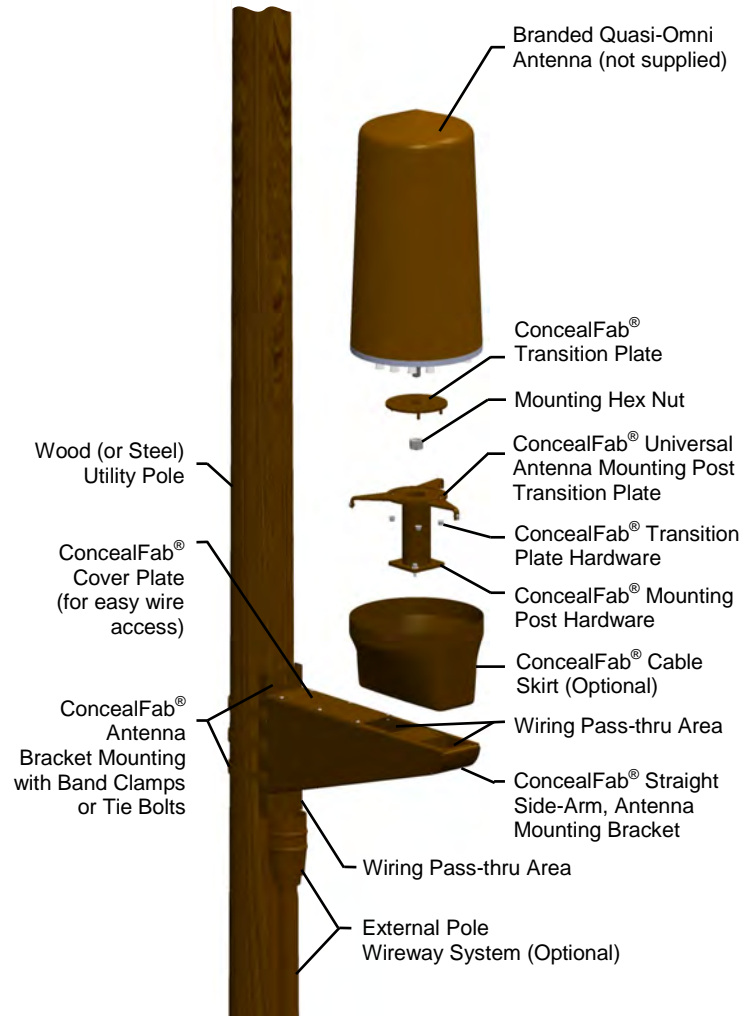
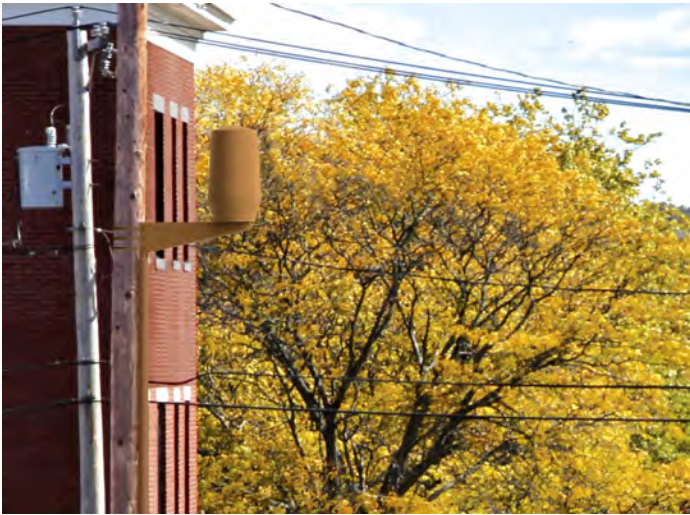


WWW.CONCEALFAB.COM PH:719.599.3400 SALES@CONCEALFAB.COM

©2013 ConcealFab Corporation. All Rights Reserved D071328
Content and specifications are typical and subject to change without notice

CONCEALFAB® UNIVERSAL SIDE-ARM MOUNTING SYSTEM

Customized for all Major Quasi-Omni Antennas



DAS and Small Cell Solutions

Universal Side-Arm Mounting System - Customized for Quasi-Omni Antennas

ConcealFab's proven wireless solutions are ideal complements to all infrastructure upgrades or retrofit projects. Our standard or custom systems integrate with any antenna and radio configurations, effortlessly blend into urban/suburban environments, and withstand harsh weather conditions. This vendor agnostic, *DAS and Small Cell Solutions* platform accommodates multiple shapes, sizes and weights, providing flexibility for future hardware needs. The product portfolio includes ultra-RF transparent, maintenance-free coverings, high-strength steel mounting brackets, and light-weight, durable carbon fiber poles.

General Specifications:

- Rated for extreme exposure zones
- Penetrating or clamping Side-Arm attachments
- Universal platform for all hardware options
- Site-specific adaptations available
- Hollow core for concealing cables or diplexers
- Color-coordinated wireway systems available
- Adjustable bracing for varying pole diameters
- Modular configurations blend into any environment



WWW.CONCEALFAB.COM PH:719.599.3400 SALES@CONCEALFAB.COM

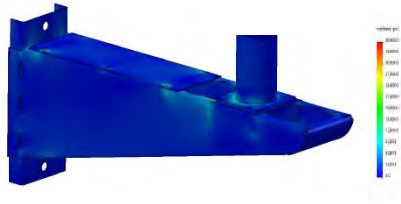
©2013 ConcealFab Corporation. All Rights Reserved D071328
Content and specifications are typical and subject to change without notice

CONCEALFAB® UNIVERSAL SIDE-ARM MOUNTING SYSTEM

Customized for all Major Quasi-Omni Antennas



Structurally Sound

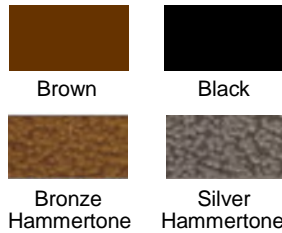


- Structurally designed and reinforced to accommodate Quasi-Omni antennas
- FEA Rated for 150 MPH wind gusts
- PE Certified for extreme exposure zones



Aesthetically Pleasing

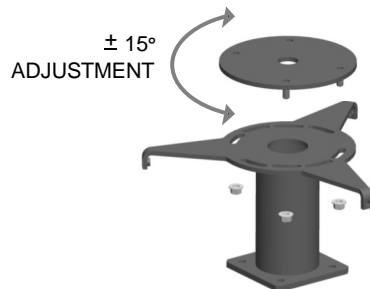
MULTIPLE COLOR OPTIONS



- Powder-coat finish protects against harsh weather
- Matches common infrastructure such as wooden or steel utility poles
- Optional wireway system
- Optional custom color matching

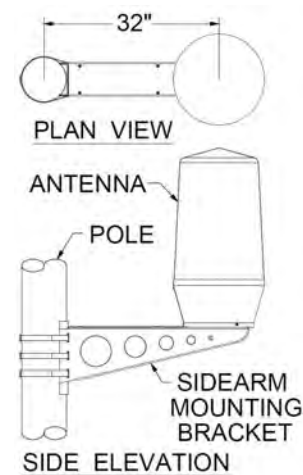


Universal Platform



- Universal mounting plates/adaptors for: Kathrein-Scala, CSS, Andrew and Amphenol
- Mounting plate configuration accommodates post-installation azimuth adjustment
- Seamlessly integrates with all ConcealFab RF-transparent antenna pods
- Optional mast configuration to mount individual or multiple panel antennas

MECHANICAL SPECIFICATIONS AS DRAWN	
SPECIFICATION	MEASUREMENT
BRACKET HEIGHT	13" (330mm)
BRACKET LENGTH	34" (864mm)
ANTENNA HEIGHT	24" (610mm)
CENTERLINE ANTENNA / POLE	32" (813mm)
SIDE-ARM BRACKET WEIGHT	47 POUNDS (21kg)

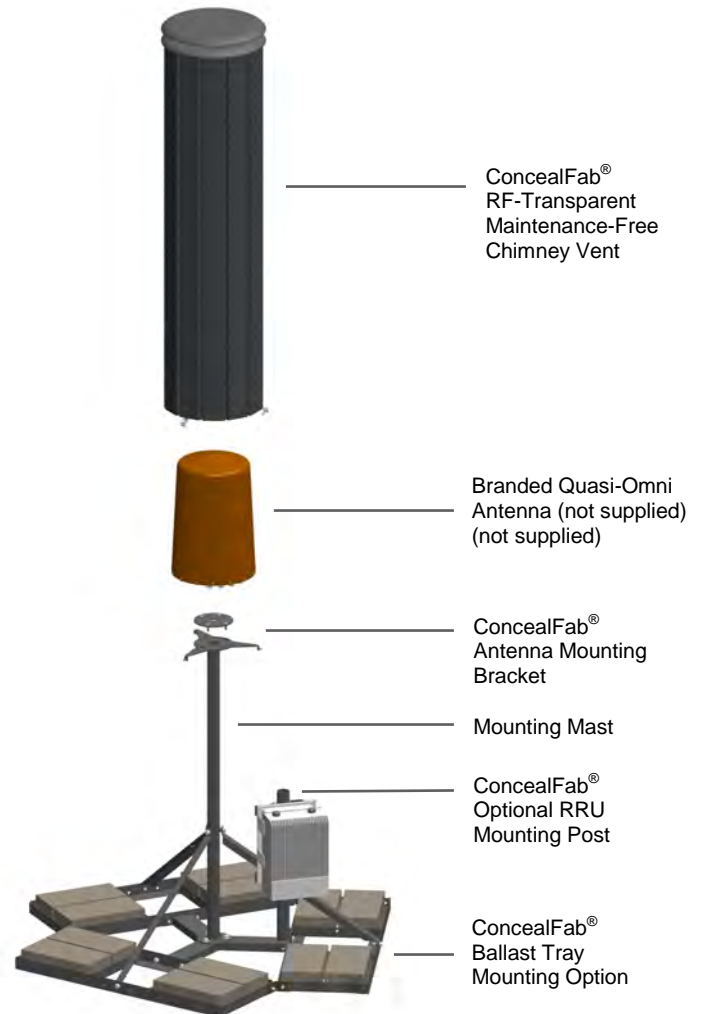


WWW.CONCEALFAB.COM PH:719.599.3400 SALES@CONCEALFAB.COM

©2013 ConcealFab Corporation. All Rights Reserved D071328
Content and specifications are typical and subject to change without notice

CONCEALFAB® UNIVERSAL ROOFTOP VENT SYSTEM

Customized for all Major Quasi-Omni Antennas



DAS and Small Cell Solutions

Universal Rooftop Vent System - Customized for all Major Quasi-Omni Antennas

ConcealFab's proven wireless solutions are ideal complements to all infrastructure upgrades or retrofit projects. Our standard or custom systems integrate with any antenna and radio configurations, effortlessly blend into urban/suburban environments, and withstand harsh weather conditions. This vendor agnostic, *DAS and Small Cell Solutions* platform accommodates multiple shapes, sizes and weights, providing flexibility for future hardware needs. The product portfolio includes ultra-RF transparent, maintenance-free coverings, high-strength steel mounting brackets, and light-weight, durable carbon fiber poles.

General Specifications:

- Rated for extreme exposure zones
- One-piece construction (no onsite welding required)
- Universal platform for all hardware options
- Site-specific adaptations available
- Ultra-RF transparent sheathing
- Multiple color options available
- Accommodates varied heights
- Optional RRU mounting post



WWW.CONCEALFAB.COM PH:719.599.3400 SALES@CONCEALFAB.COM

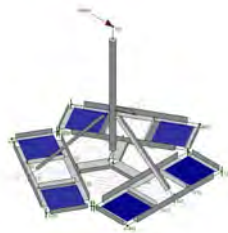
©2013 ConcealFab Corporation. All Rights Reserved D071328
Content and specifications are typical and subject to change without notice

CONCEALFAB® UNIVERSAL ROOFTOP VENT SYSTEM

Customized for all Major Quasi-Omni Antennas



Structurally Sound

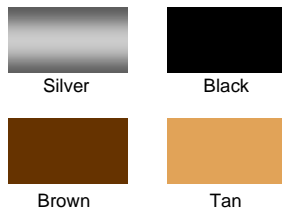


- Structurally designed and reinforced to accommodate Quasi-Omni antennas
- FEA Rated for 150 MPH wind gusts (penetrated) 90 MPG wind gusts (ballasted)
- PE Certified for extreme exposure zones



Aesthetically Pleasing

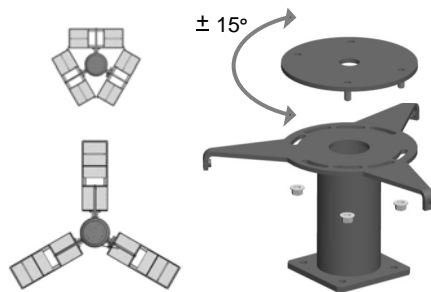
RF TRANSPARENT COLOR OPTIONS



- Powder-coat finish protects against harsh weather
- Ultra-RF transparent covering available in multiple colors
- Optional RRU mounting post



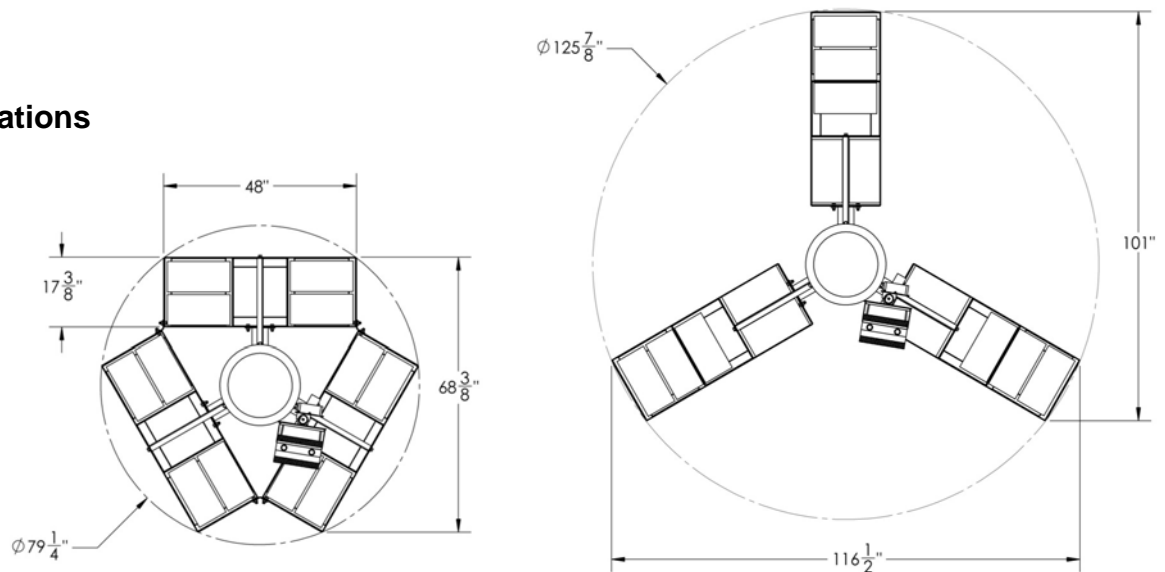
Universal Mounting



- Reconfigurable ballast tray system allows for multiple heights
- Mounting plates mate to other standard antenna types
- Optional mast configuration to mount individual or multiple panel antennas



Modular Configurations

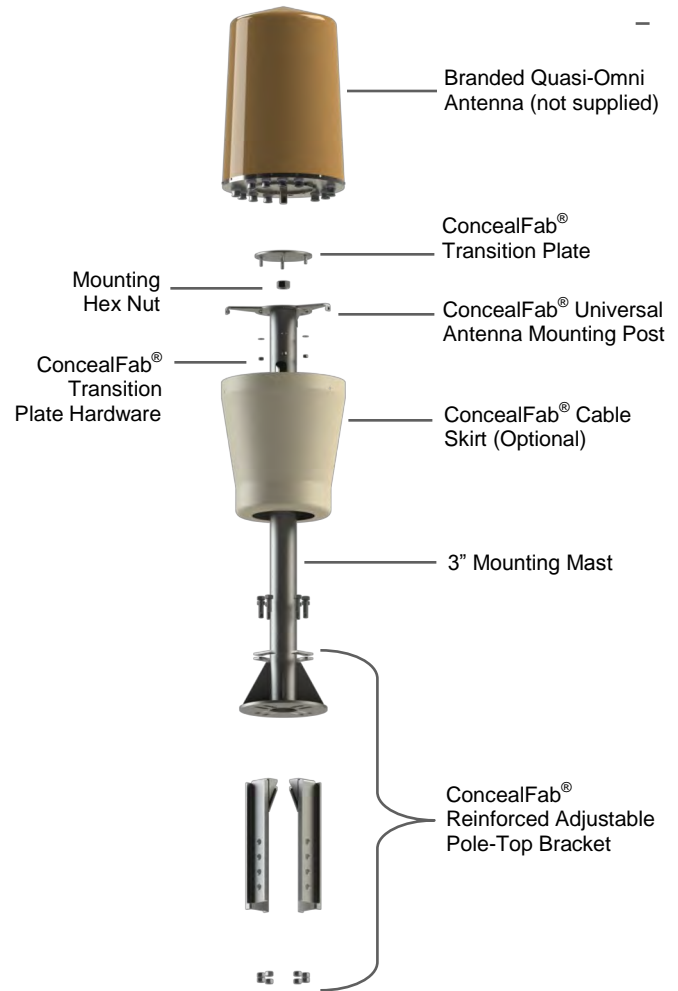


WWW.CONCEALFAB.COM PH:719.599.3400 SALES@CONCEALFAB.COM

©2013 ConcealFab Corporation. All Rights Reserved D071328
Content and specifications are typical and subject to change without notice

CONCEALFAB® UNIVERSAL POLE-TOP EXTENSION SYSTEM

Customized for all Major Quasi-Omni Antennas



DAS and Small Cell Solutions

Universal Pole-Top Extension System - Customized for all Major Quasi-Omni Antennas

ConcealFab's proven wireless solutions are ideal complements to all infrastructure upgrades or retrofit projects. Our standard or custom systems integrate with any antenna and radio configurations, effortlessly blend into urban/suburban environments, and withstand harsh weather conditions. This vendor agnostic, *DAS and Small Cell Solutions* platform accommodates multiple shapes, sizes and weights, providing flexibility for future hardware needs. The product portfolio includes ultra-RF transparent, maintenance-free coverings, high-strength steel mounting brackets, and light-weight, durable carbon fiber poles.

General Specifications:

- Rated for extreme exposure zones
- Penetrating or clamping Pole-Top attachments
- Universal platform for all hardware options
- Site-specific adaptations available
- Extension mast ensures proper distance from utility pole wires
- Structurally reinforced steel support
- Adjustable bracing for varying pole diameters
- Modular configurations blend into any environment

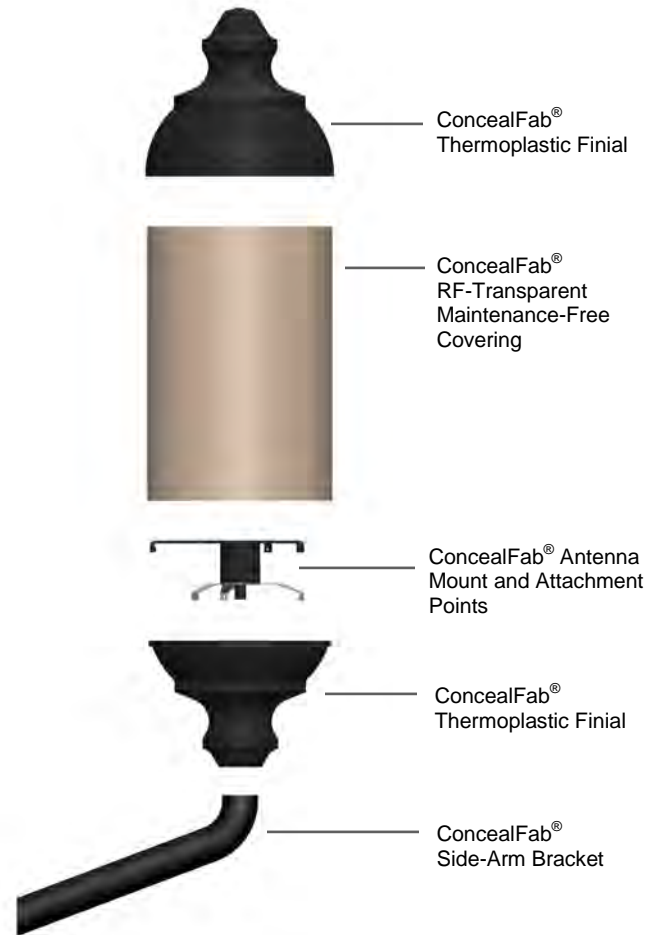


WWW.CONCEALFAB.COM PH:719.599.3400 SALES@CONCEALFAB.COM

©2013 ConcealFab Corporation. All Rights Reserved D071328
Content and specifications are typical and subject to change without notice

CONCEALFAB® UNIVERSAL LIGHTENNA SYSTEM

Customized for all Major Quasi-Omni Antennas



DAS and Small Cell Solutions

Universal Lightenna System - Customized for Quasi-Omni Antennas

ConcealFab's proven wireless solutions are ideal complements to all infrastructure upgrades or retrofit projects. Our standard or custom systems integrate with any antenna and radio configurations, effortlessly blend into urban/suburban environments, and withstand harsh weather conditions. This vendor agnostic, *DAS and Small Cell Solutions* platform accommodates multiple shapes, sizes and weights, providing flexibility for future hardware needs. The product portfolio includes ultra-RF transparent, maintenance-free coverings, high-strength steel mounting brackets, and light-weight, durable carbon fiber poles.

General Specifications:

- Rated for extreme exposure zones
- Penetrating or clamping Side-Arm attachments
- Universal platform for all hardware options
- Site-specific adaptations available
- Hollow Side-Arm for bracket for cable concealment
- 100% Thermoplastic outer shell
- Adjustable bracing for varying pole diameters
- Modular configurations blend into any environment



WWW.CONCEALFAB.COM PH:719.599.3400 SALES@CONCEALFAB.COM

©2013 ConcealFab Corporation. All Rights Reserved D071328
Content and specifications are typical and subject to change without notice