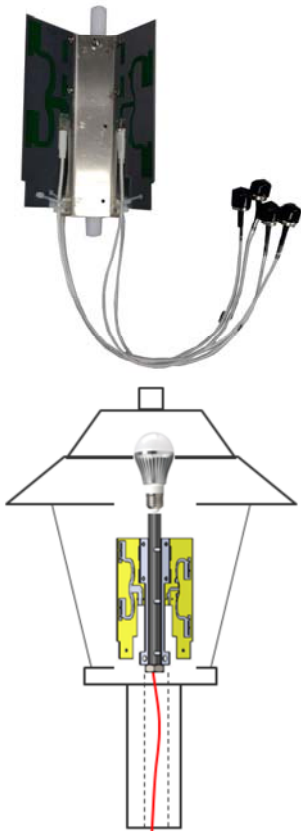




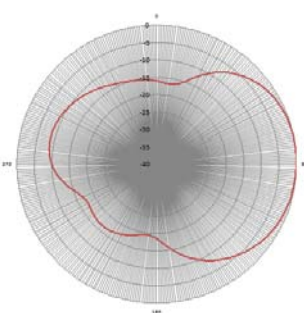
2.4/5 GHz 6 dBi Omnidirectional Wi-Fi Antenna with 4 RPTNC Plugs for High Intensity Discharge (HID) Light Globes

Ventev's TerraWave 2.4/5 GHz 6 dBi Multiple-Input and Multiple-Output (MIMO) Omnidirectional Wi-Fi Antenna for HID Light Globes transforms outdoor light globes into Wi-Fi hot spots. The antenna is designed to operate with Cisco's 802.11ac Waves I & II WLAN outdoor access points including the 1570 and IW3700 models. This unique antenna installs inside outdoor lighting globes to provide concealed, high-performance Wi-Fi that blends inconspicuously into the environment. The antenna unit, with integrated mount and radiating elements, delivers assembled and installs around and secures to the light globe's internal conduit. See mounting instructions on page 2. *Every Ventev TerraWave antenna is RoHS compliant, and is covered by the two-year TerraNet warranty program. For more information, contact Ventev 800-851-4965 or sales@ventev.com.*

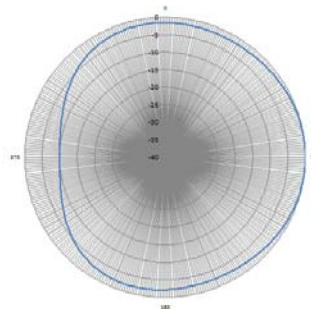


Antenna integrated into HID Light Globe

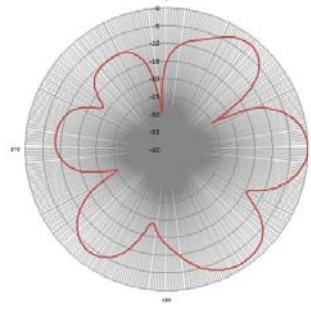
Specifications	
Model	M606006001D41202L
Frequency Range	2400~2500 / 4900~5850 MHz
Bandwidth	100 / 950 MHz
Gain	6 dBi
Vertical Beamwidth	65°/20°
Horizontal Beamwidth	360°/360°
VSWR	≤2.0 / ≤2.0
Nominal Impedance	50 Ohms
Polarization	Vertical
Max Power Rating	10W
Dimensions	3.75" x 3.3" x 5.5"
Weight	8.8 oz
Connector	4 x RPTNC Plug
Number/Length/Type Pigtaills	4 x 12" Pigtaills / RG-316
Mounting Method	Installs around and secures to internal conduit. Maximum conduit size is .5" diameter
Operating Temperature	- 40° F to +140° F



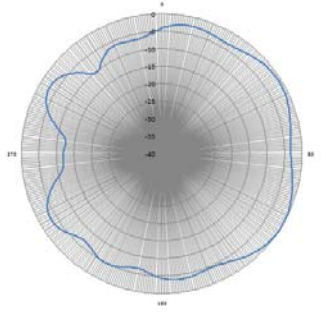
E-Plane Pattern



H-Plane Pattern

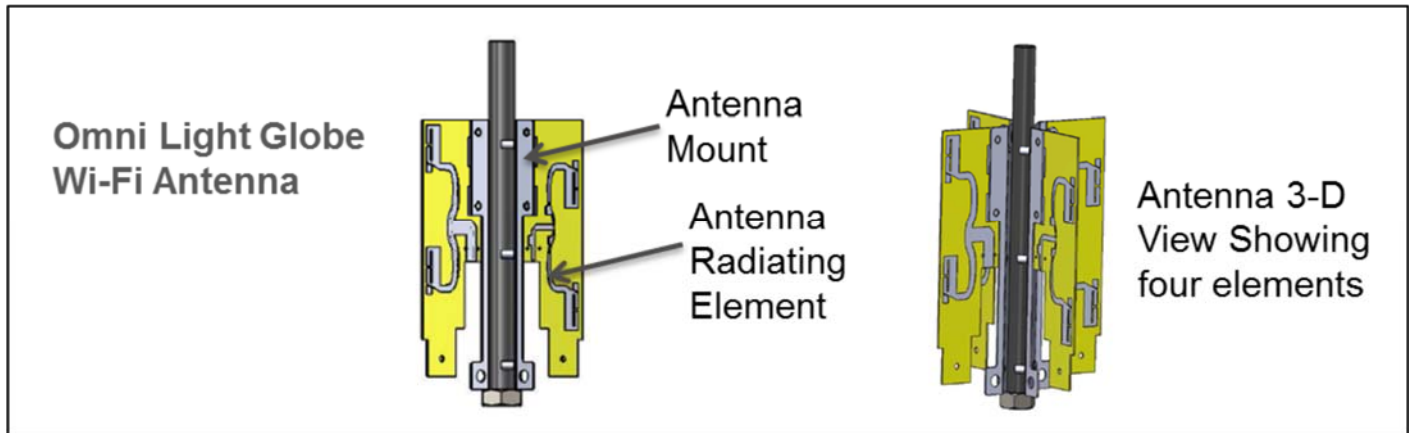


E-Plane Pattern



H-Plane Pattern

2.4/5 GHz 6 dBi Omnidirectional Wi-Fi Antenna with 4 RPTNC Plugs for High Intensity Discharge (HID) Light Globes



Mounting Instructions

1. Place the antenna assembly above the conduit and slide the wire in the gap between the standoff and plate.
2. Slide the assembly down so the conduit is in the center of the assembly.
3. Tighten set screw