


## CX063X25x00

X-Pol | Single Band VET Panel | 65° | 16.8 dBi

Ordering Options	Model Number			
Manual Electrical Tilt	CX063X25M00			
Remote Electrical Tilt AISG v1.1	CX063X25R00			
Remote Electrical Tilt AISG v2.0 / 3GPP	CX063X25G00			
Electrical Characteristics	696-960 MHz			
Frequency bands (MHz)	696-806		806-960	
Polarization	±45°			
Horizontal beamwidth	70°		65°	
Vertical beamwidth	7.4°		6.9°	
Gain	16.3 dBi		16.8 dBi	
Electrical downtilt	0-10°			
Impedance	50Ω			
VSWR	< 1.5:1			
Upper sidelobe suppression	< -18 dB typical			
Front-to-back ratio	> 25 dB			
In-band isolation	> 25 dB			
Input power	2 x 500 W			
IM3 (2x20W carriers)	< -153 dBc			
Lightning protection	Direct Ground			
Operating temperature	-40° to +60° C (-40° to +140° F)			
Connector(s)	2 Ports / 7/16 DIN / Female / Bottom			
Mechanical Characteristics				
Dimensions Length x Width x Depth	2508 x 305 x 180 mm		98.7 x 12.0 x 7.1 in	
Weight without mounting brackets: MET	15.9 kg		35.0 lbs	
Weight without mounting brackets: RET	16.2 kg		35.7 lbs	
Survival wind speed	241 km/hr		150 mph	
Wind loads (160 km/hr or 100 mph)	Front: 930 N; Side: 550 N		Front: 209; Side: 124 lbf	
Remote Electrical Downtilt Control				
Remote Electrical Tilt (RET) Control	The remote control of the electrical tilt is managed by a module (MDCU) totally inserted at the bottom of the antenna. One single module controls individually the tilt of each band (no need of daisy chain cables between the bands). This module does not add any additional length at the bottom of the antenna. For RET control, the transparent cap must be in place and locked. The tilt angle indicator always remains visible and the antenna still has manual tilt control (manual override).			
RET Module Part Number (one per antenna)	MDCU-A0000 for AISG v1.1 protocol (one unit included in CX063X25R00)  MDCU-G0000 for 3GPPP/AISG v2.0 protocol (one unit included in CX063X25G00)			
Important Installation Instructions	 <b>In order to operate RET control, the transparent cap covering the tilt adjustment indicator must be engaged and locked. Do not cut the cap from the antenna.</b>			
Mounting Options	Part Number	Fits Pipe Diameter		Weight
3-Point Mounting Bracket Kit	MKS09P02	50-115 mm	2.0-4.5 in	4.1 kg 9 lbs
3-Point Mounting & Downtilt Bracket Kit	MKS09T02	50-115 mm	2.0-4.5 in	6.4 kg 14 lbs
Tri-Sector UNICELL Options				
For use inside UNICELL modules	UNX-20-xx			

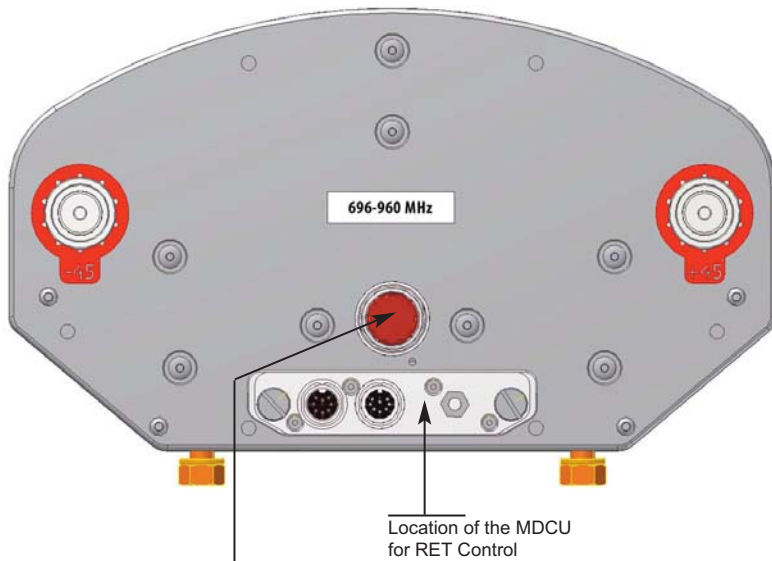


Quoted performance parameters are provided to offer typical or range values only and may vary as a result of normal manufacturing and operational conditions. Extreme operational conditions and/or stress on structural supports is beyond our control. Such conditions may result in damage to this product. Improvements to product may be made without notice.

# CX063X25x00

X-Pol | Single Band VET Panel | 65° | 16.8 dBi

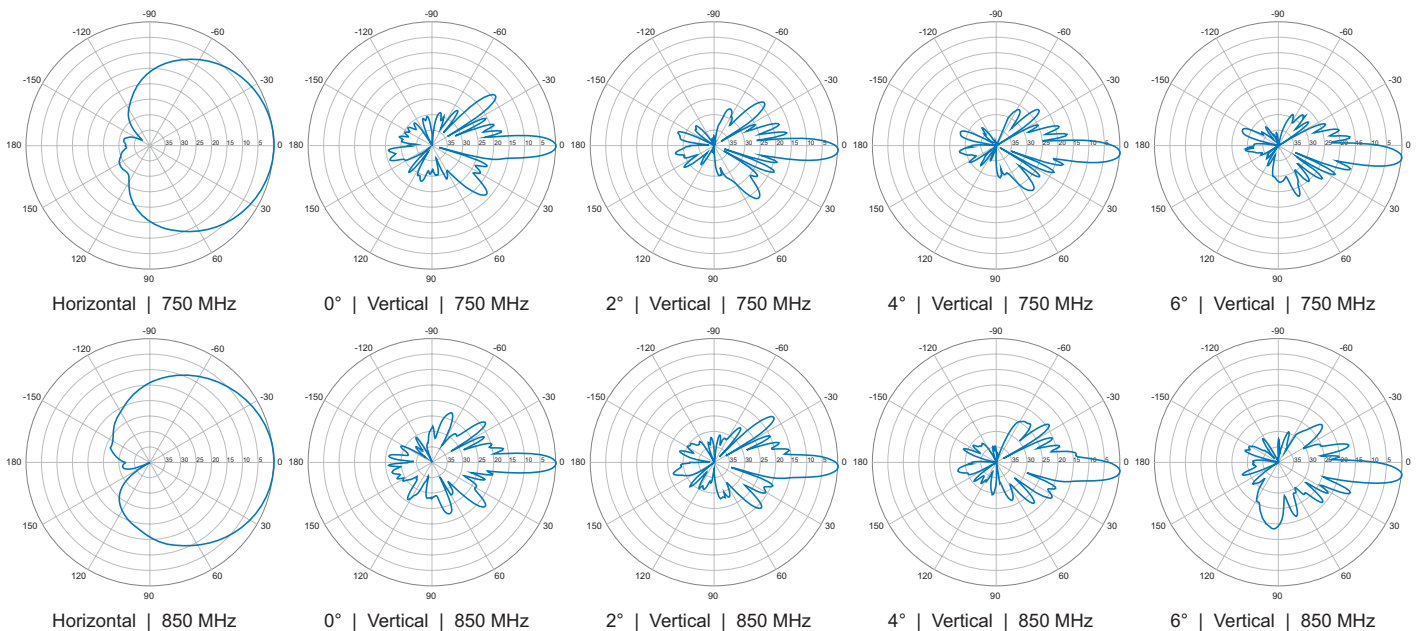
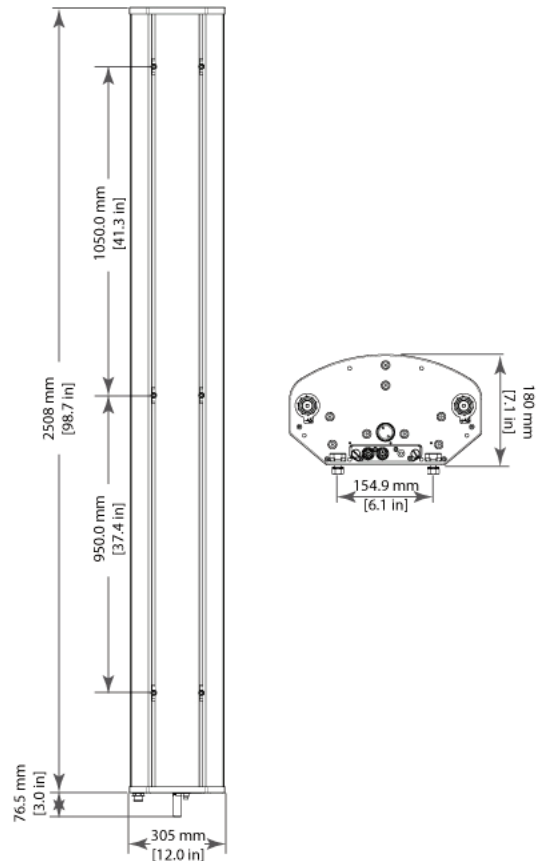
Bottom View



Tilt indicator covered by transparent cap. Manual adjustment is accessed by removing the cap. Knob color is the same as the connectors.

**! In order to operate RET control, the transparent cap covering the tilt adjustment indicator must be engaged and locked. Do not cut the cap from the antenna.**

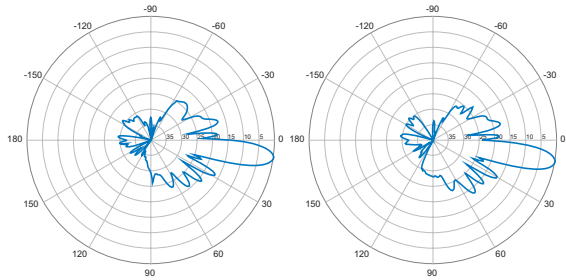
Dimensions



Quoted performance parameters are provided to offer typical or range values only and may vary as a result of normal manufacturing and operational conditions. Extreme operational conditions and/or stress on structural supports is beyond our control. Such conditions may result in damage to this product. Improvements to product may be made without notice.

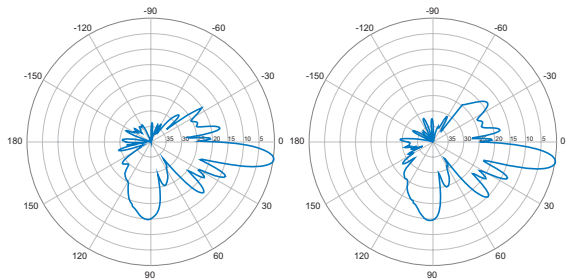
CX063X25x00

X-Pol | Single Band VET Panel | 65° | 16.8 dBi



8° | Vertical | 750 MHz

10° | Vertical | 750 MHz



8° | Vertical | 850 MHz

10° | Vertical | 850 MHz

Quoted performance parameters are provided to offer typical or range values only and may vary as a result of normal manufacturing and operational conditions. Extreme operational conditions and/or stress on structural supports is beyond our control. Such conditions may result in damage to this product. Improvements to product may be made without notice.